

# Rolfe East



## King Edwards Gardens, W3

£2,795

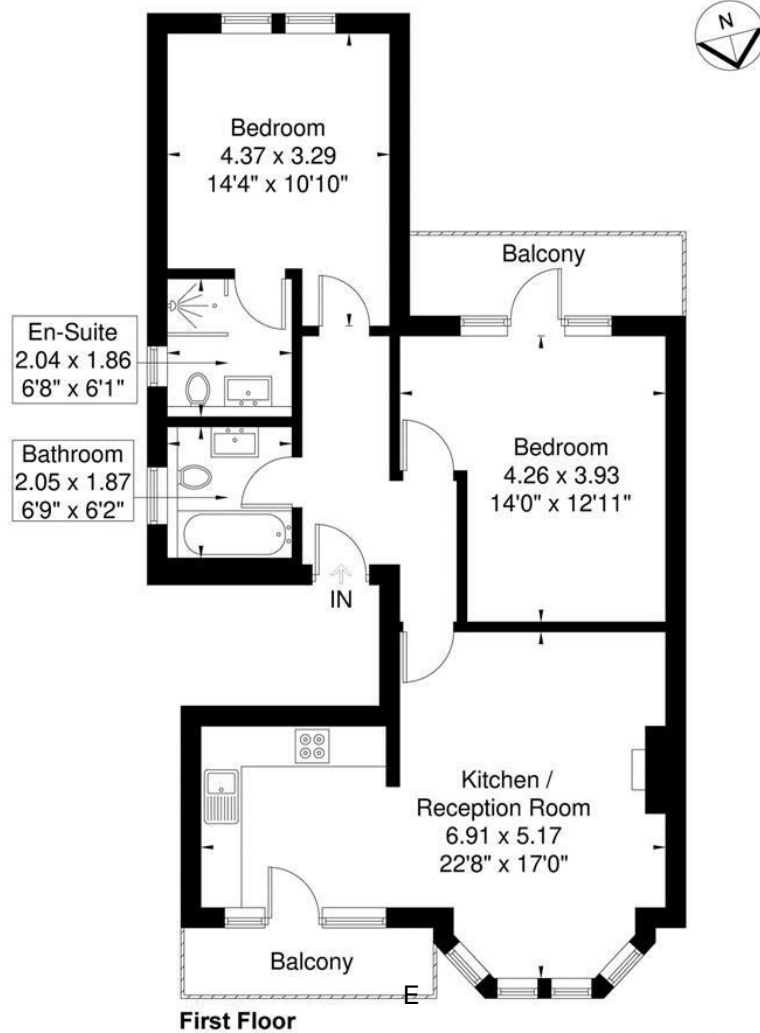
- High Spec First Floor Apartment
- Two Bedrooms
- Two Bathrooms
- Two Balconies
- Unfurnished
- Available Now

66 High Street, Acton, W3 6LE  
020 8993 7755

[actonlettings@rolfe-east.com](mailto:actonlettings@rolfe-east.com)  
<https://www.rolfe-east.com/>

## King Edward Gardens

Approximate Gross Internal Area = 70.3 sq m / 756 sq ft



Although every attempt has been made to ensure accuracy, all measurements are approximate.  
The floorplan is for illustrative purposes only and not to scale.  
© www.perspective.co.uk

## Viewings

Viewings by arrangement only. Call 020 8993 7755 to make an appointment.

## Council Tax Band

## EPC Rating:

C

### Energy Efficiency Rating

	Current	Potential
Very energy efficient - lower running costs		
(92 plus) <b>A</b>		
(81-91) <b>B</b>		
(69-80) <b>C</b>	72	80
(55-68) <b>D</b>		
(39-54) <b>E</b>		
(21-38) <b>F</b>		
(1-20) <b>G</b>		
Not energy efficient - higher running costs		
<b>England &amp; Wales</b>	EU Directive 2002/91/EC 